

STRUCTURAL ENGINEERING

M.E.P. ENGINEERING

CIVIL ENGINEERING

KADMAR PLAZA

ORLANDO , FLORIDA

ASE ENGINEERING SERVICES, INC.
STRUCTURAL DESIGN GROUP

10244 East Colonial Drive, Suite 202
Orlando, Florida 32817 - (407) 477-5868 Fax (407) 730-2999
Certificate of Authorization No. 25873

Mansheng Xie P.E.
Florida No. 51161

STOFFER & ASSOCIATES INC.
CONSULTING ENGINEERS

10281 Hart Branch Circle
Orlando, Florida 32832 - (407) 381-4555 FAX (407) 249-1520
CA #26069

Randall D. Stoffer, P.E. # 37367

FLORIDA ENGINEERING GROUP INC.
CONSULTING ENGINEERS

5127 S. Orange Avenue, Suite 200
Orlando, Florida 32809 - (407) 392-8324 FAX (407) 895-0325
CERTIFICATE #EB-0006595

Sam J. Sabatelli, P.E. # 42075

GENERAL NOTES:

TENANT IS REQUIRED TO MAKE A FIELD SURVEY OF THE EXISTING ELECTRICAL SERVICE AND IS RESPONSIBLE FOR MAKING ANY AND/OR ALL MODIFICATIONS REQUIRED TO ENSURE THAT THE TOTAL CONNECTION LOAD DOES NOT EXCEED THE ELECTRICAL SERVICE.

APPROVAL OF TENANT'S CONSTRUCTION DOCUMENTS AND SPECIFICATIONS BY THE LANDLORD DOES NOT RELEASE THE TENANT OR THE TENANT'S CONTRACTOR FROM COMPLYING WITH THE LEASE AGREEMENT AND ALL APPLICABLE BUILDING CODES AND GOVERNING REGULATIONS.

NOTHING IS PERMITTED TO BE ATTACHED TO, SUSPENDED FROM, OR PENETRATE THE ROOF DECK ABOVE. YOU ARE REQUIRED TO FRAME, BRACE, AND/OR SUSPEND, AS NEEDED, TO/FROM THE TOP CHORD OF JOISTS OR STRUCTURAL STEEL WHICH EXISTS ABOVE YOUR RESPECTIVE TENANT SPACE.

THE TENANT SHALL BE RESPONSIBLE FOR VERIFYING THAT THESE REMODEL CONSTRUCTION DOCUMENTS MEET ALL A.D.A. STANDARDS OR REQUIREMENTS.

PLEASE NOTE: ANY ITEM SCHEDULED TO BE REUSED MUST BE REFURBISHED AND MAINTAINED TO A "LIKE NEW" CONDITION. NO EXCEPTIONS.

- ALL WORK SHALL CONFORM TO THE FOLLOWING:
 - FLORIDA BUILDING CODE SIXTH EDITION (2011); BUILDING
 - FLORIDA BUILDING CODE SIXTH EDITION (2011); FUEL GAS
 - FLORIDA BUILDING CODE SIXTH EDITION (2011); MECHANICAL
 - FLORIDA BUILDING CODE SIXTH EDITION (2011); PLUMBING
 - 2011 FLORIDA FIRE PREVENTION CODE
 - 2014 NATIONAL ELECTRIC CODE
 - FLORIDA BUILDING CODE SIXTH EDITION (2011); ACCESSIBILITY CODE
 - FLORIDA BUILDING CODE SIXTH EDITION (2011); ENERGY CONSERVATION
- SUBCONTRACTORS SHALL VERIFY ALL CONDITIONS, DETAILS AND DIMENSIONS BEFORE PROCEEDING WITH THE WORK AND SHALL BE NOTIFIED OF ANY DISCREPANCIES.
- DO NOT SCALE DRAWINGS.
- ALL WORK IN QUESTION INCLUDING MATERIALS, FINISHES AND COLORS SHALL BE COORDINATED WITH THE PROJECT MANAGER.
- SPRINKLER CONTRACTOR SHALL VERIFY EXISTING LAYOUT AND SUBMIT PROPOSAL OF WORK REQUIRED TO MEET CODE.
- MECHANICAL AND ELECTRICAL SUBCONTRACTORS SHALL BE RESPONSIBLE FOR SUBMITTING DRAWINGS AND OBTAINING THEIR RESPECTIVE PERMITS.
- TENANT TO CERTIFY THAT NO ASBESTOS CONTAINING MATERIAL HAS BEEN USED FOR CONSTRUCTION OF THIS PREMISES.
- ALL INTERIOR WALL AND CEILING FINISHES SHALL COMPLY WITH NFPA 101, SECTION 10.2.3 AND TABLE 803.5 OF FBC 2010.

OCCUPANCY - M (MERCANTILE), SHELL ONLY
CONSTRUCTION TYPE - II-B, FULLY SPRINKLERED
MIN. INT. FINISH CLASS - 'B'

FBC SIXTH EDITION (2011) - TABLE 601 - FIRE RESISTANCE RATING REQUIREMENTS FOR BUILDING ELEMENTS	
CONSTRUCTION TYPE II-B	
PRIMARY STRUCTURAL FRAME	0HR
BEARING WALLS	
EXTERIOR	0HR
INTERIOR	0HR
NONBEARING WALLS AND PARTITIONS	0HR
FLOOR CONSTRUCTION	0HR
ROOF CONSTRUCTION	0HR

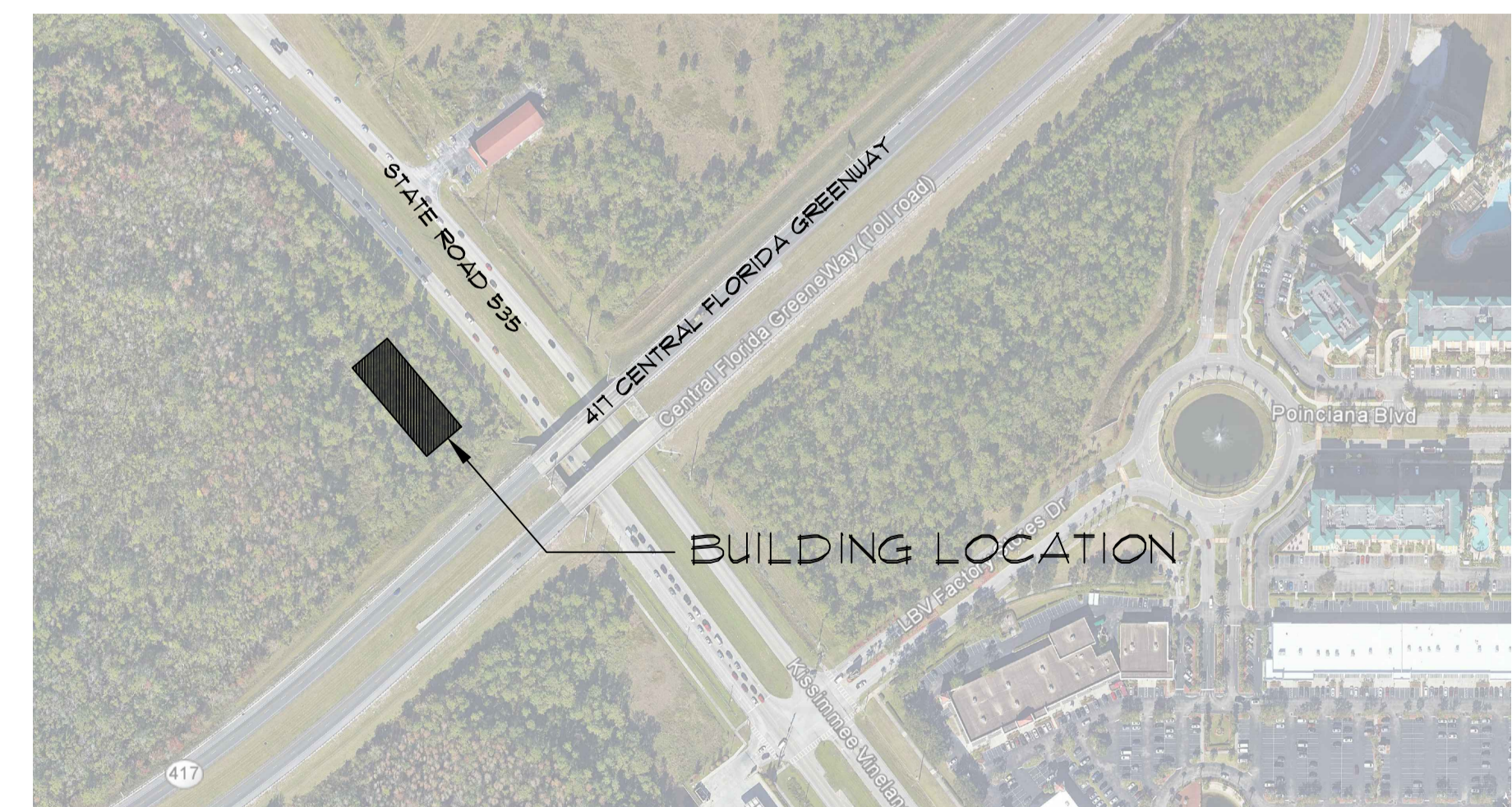
NOTE:
NEW DOORS AND WINDOWS HAVE BEEN DESIGNED TO MEET OR EXCEED THE REQUIREMENTS OF SEC. 1609 OF THE FLORIDA BUILDING CODE SIXTH EDITION (2011).

- RISK CATEGORY = II
- NOMINAL DESIGN WIND SPEED = 124
- ULTIMATE DESIGN WIND SPEED = 160
- WIND IMPORTANCE FACTOR = 1.0
- WIND EXPOSURE = CATEGORY 'C'

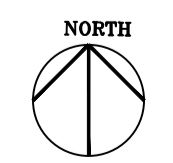
TABULAR INFORMATION	
CONDITIONED AREA	14,348 SQ FT
COVERED ENTRANCE	1,926 SQ FT
SPRINKLER ROOM	24 SQ FT
TOTAL AREA UNDER ROOF	16,898 SQ FT

INDEX OF DRAWINGS		
SHEET #	SHEET DESCRIPTION	REVISION
ARCHITECTURAL	CS	COVER SHEET
	GN01	GENERAL NOTES
	GN02	GENERAL NOTES
	GN03	GENERAL NOTES
	GN04	GENERAL NOTES
	GN05	GENERAL NOTES
	GN06	GENERAL NOTES
GN07	GENERAL NOTES	
STRUCTURAL	A100	SITE PLAN
	A101	FLOOR PLAN
	A102	REFLECTED CEILING PLAN
	A103	ROOF PLAN
	A201	EXTERIOR ELEVATIONS
	A301	SECTIONS
	A302	SECTION/ DETAILS
A601	SCHEDULES/ DETAIL	
A701	LIFE SAFETY PLAN	
MECHANICAL	S1.01	STRUCTURAL GENERAL NOTES
	S2.01	FOUNDATION PLAN
	S3.01	ROOF FRAMING PLAN
	S5.01	DETAILS
	S5.02	DETAILS
	S5.03	DETAILS
	S5.04	DETAILS
S5.05	DETAILS	
ELECTRICAL	M-1	FLOOR PLAN - HVAC
	M-2	HVAC NOTES AND DETAIL
ELECTRICAL	ES1	SITE PLAN - ELECTRICAL
	E-1	FLOOR PLAN - ELECTRICAL
	E-2	ELECTRICAL DETAILS AND RISER
PLUMBING	P-1	FLOOR PLAN - PLUMBING
	P-2	PLUMBING ISOMETRICS
	P-3	DETAILS & NOTES

SHELL PERMIT ONLY - INTERIOR BUILDOUT WILL BE PERMITTED SEPARATELY AT A LATER DATE



LOCATION PLAN



REVISIONS	PROJECT NO.	DATE
1	173098025-01	07/09/2018
2		
3		
4		
5		
6		
7		
8		

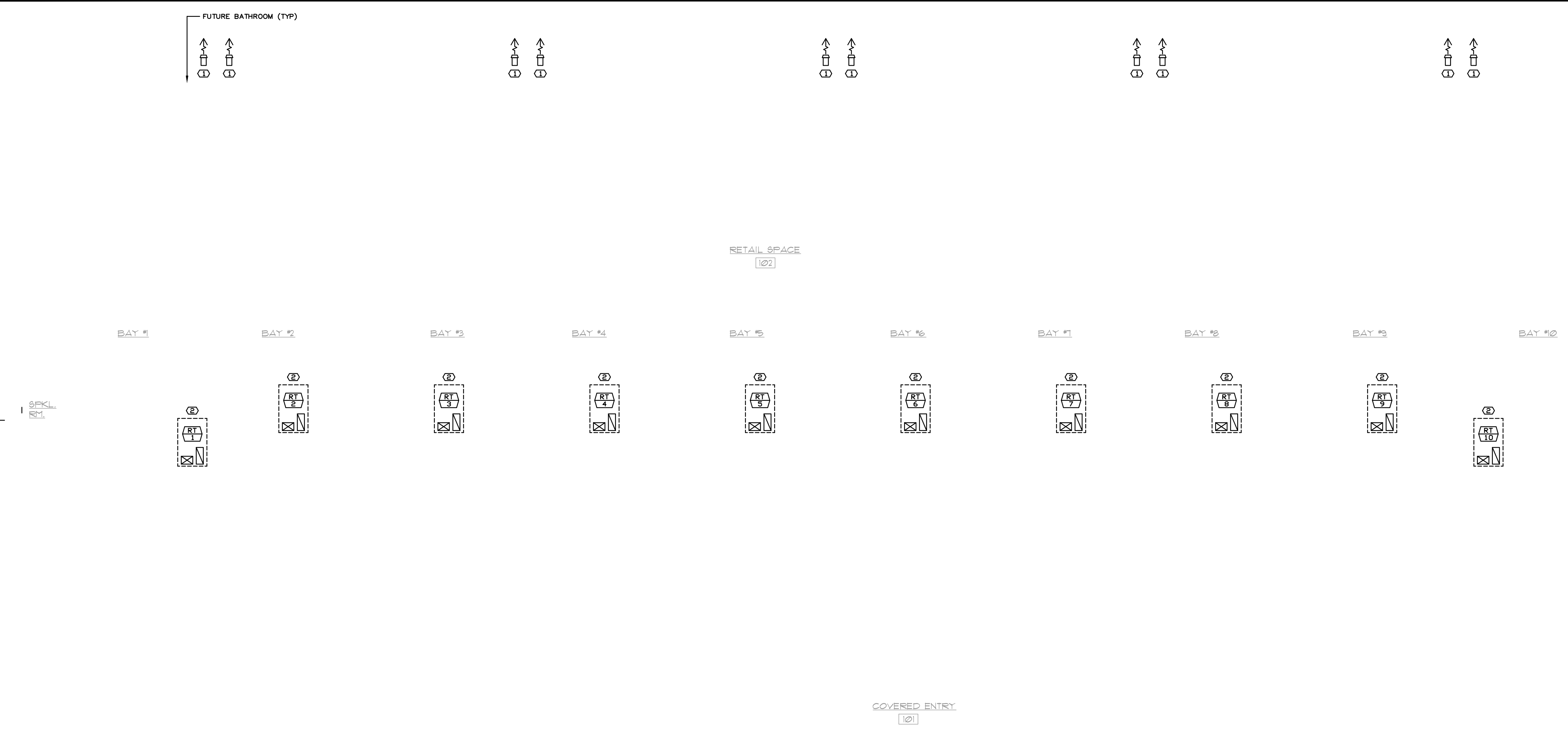
COVER SHEET

NEW RETAIL CENTER FOR:
KADMAR PLAZA
ORLANDO, FLORIDA

AA26002490
RABITS & ROMANO
 ARCHITECTURE
 PLANNING AND DESIGN
 info@rabits-architect.com
 www.rabits-architect.com
 TEL - 407-996-0350
 FAX - 407-232-6000
 5127 SOUTH ORANGE AVE.
 SUITE 110 ORLANDO, FL 32809

SIGN/SEAL

DATE
SHEET
06
OF
33



ROOFTOP SCHEDULE

MARK AREA SERVED	RT-1, 10 SEE PLANS 410-A	RT-2 THRU 9 SEE PLANS 410-A
SYSTEM TYPE	CLG/HEAT DOWNFLOW	CLG/HEAT DOWNFLOW
CONFIGURATION	CARRIER	CARRIER
MANUFACTURER	50FC-M07	50FC-A06
MODEL NO.	825	725
OPERATING WT (LBS)(W/14" CURB)	41x75x45	42x75x45
UNIT SIZE (IN) (HxWxD)		
INDOOR FAN DATA:		
CFM TOTAL	1920	1600
CFM O.A.	330	320
E. S. P. (" W. G.)	1.0	.80
H. P. / F. L. A.	1.3/8.4	1.1/8.4
RPM (SPEED)	DIRECT	DIRECT
ARI COOLING DATA (95 DEG F AMB)		
TOTAL CAPACITY (TMBH)	70	59.3
SENSIBLE CAPACITY (SMBH)	58.1	44.7
ENT. AIR TEMP. (F)(DB/WB)	80/67	80/67
HEATING CAPACITY DATA:		
BTUH (30 DEG F AMBIENT)	-	-
KW (@ RATED VOLTAGE)	12.0	7.9
HEATER STAGES	1	1
CONDENSING DATA:		
NO. COMPRESSORS	1	1
NO. COOLING STAGES	0/100	0/100
COMP. R. L. A. (EA.)	19.6	16.0
COMP. L. R. A. (EA.)	136	110
NO. COND. FANS	1	1
COND. FAN (H. P. / F. L. A.)	.25/1.5	.25/1.5
ELECTRICAL DATA:		
V/PH/60	208/3/60	208/3/60
MCA	52	36
MAX FUSE	60	40
ENERGY EFFICIENCY DATA:		
EER / IPLV (@ ARI STD.)	11.2/12.9	-/-
SEER (@ ARI STD.)	-	14.0
COP (HEATING)	1.0	1.0
REMARKS:	SEE BELOW	SEE BELOW

- ROOFTOP NOTES:**
- SELECTION BASED ON CARRIER, PROVIDE CARRIER, TRANE OR APPROVED EQUAL.
 - PROVIDE A/C UNITS WITH PROGRAMABLE HEATING AND COOLING THERMOSTAT WITH FAN ON-OFF-AUTO SWITCH. SET STAT FOR FAN IN AUTO MODE. FAN SHALL NOT RUN UNLESS THE COMPRESSOR OR HEATER IS ON.
 - PROVIDE TWO SETS OF 2" OR 4" MERV 11 THROWAWAY FILTERS
 - PROVIDE 100% ECONOMIZER WITH BAROMETRIC RELIEF.
 - PROVIDE INSULATED FACTORY ROOF CURBS OR CURB ADAPTERS AS REQUIRED.
 - PROVIDE ANTI-SHORT CYCLE PROTECTION.
 - PROVIDE ELECTRIC HEATERS AS SCHEDULED, VERIFY MINIMUM CFM WITH MANUFACTURE.
 - E. S. P. DOES NOT INCLUDE COIL, OR CABINET LOSSES.
 - UNLESS OTHERWISE NOTED CAPACITIES AND EFFICIENCIES ARE AT ARI CONDITIONS. OUTSIDE AIR DESIGN CONDITIONS: 95 DEGREES FDB 80 DEGREES FWB. ENTERING AIR DESIGN CONDITIONS: 80 DEGREES FDB 67 DEGREES FWB.
 - COORDINATE WITH ELECTRICAL CONTRACTOR BEFORE BIDDING OR ORDERING ANY EQUIPMENT.

- HVAC KEYED NOTES: (#)**
- PROVIDE A 6' RND EXHAUST WALLCAP FOR FUTURE TENANT EXHAUST. STUB EXHAUST DUCT 12 INCHES INTO TENANT SPACE AND CAP THE END. MOUNT WALLCAP 12 INCHES BELOW BAR JOIST DR AS INSTRUCTED BY OWNER. FIELD VERIFY EXACT LOCATION PRIOR TO INSTALLATION.
 - PROVIDE A NEW PACKAGED ROOFTOP UNIT PER SCHEDULE. STUB SUPPLY AND RETURN DUCTS DOWN 24 INCHES BELOW BAR JOIST. BOTH SUPPLY AND RETURN DUCTS ARE TO BE FULL SIZE OF RTU OPENINGS. ATTACH T-STAT TO BAR JOIST.

VENTILATION REQUIREMENTS (2017 FMC SECTION 403)								
APPLICATION	QUANTITY	AREA SF	PEOPLE O.A. REQUIREMENTS			AREA O.A. REQUIREMENTS		BREATHING ZONE O.A. CFM
			AIR RATE CFM/PER 1000 SF	OCCUPANT DENSITY #/1000 SF	PEOPLE OUTDOOR AIR CFM	AREA OUTDOOR AIR RATE (CFM/SF)	AREA OUTDOOR AIR CFM	
		Az	Rp	D	Rp X(Az/(1000/D))	Ra	Ra X Az	RpPz + RaAz
SALES AREA		13,814	7.5	15	1,554	0.12	1658	3212
RESTROOM (50 CFM/ WC OR URINAL)	10	390	50.0					500
TRANSFER AIR CREDIT								-500
NONOCCUPIED AREAS, WALLS, MECH RMS		784						0
SUBTOTAL		14,988						3212
Ez (VENTILATION EFFICIENCY)								1.0
TOTAL OUTSIDE AIR REQUIRED								3212
OUTSIDE AIR PROVIDED:								
EQUIPMENT DESIGNATION	NOMINAL TONS	SUPPLY CFM	O.A. CFM EACH UNIT	QUANTITY OF UNITS	TOTAL O.A. CFM			
RT-1&10	6.0	1,920	330	2	660			
RT-2 THRU 9	5.0	1,600	320	8	2560			
TOTALS					3,220			

FLOOR PLAN - HVAC

SCALE: 1/8" = 1'-0"

REVISIONS	PROJECT NO.	DATE
1	17358803-01	06/07/2019
2		
3		
4		
5		
6		
7		
8		

NEW RETAIL CENTER FOR:
KADMAR PLAZA
ORLANDO, FLORIDA

RABITS & ROMANO ARCHITECTURE
PLANNING AND DESIGN
5127 SOUTH ORANGE AVE., SUITE 110 ORLANDO, FL 32809
TEL: 407-490-0350 FAX: 407-232-6000
info@rabits-architect.com www.rabits-architect.com

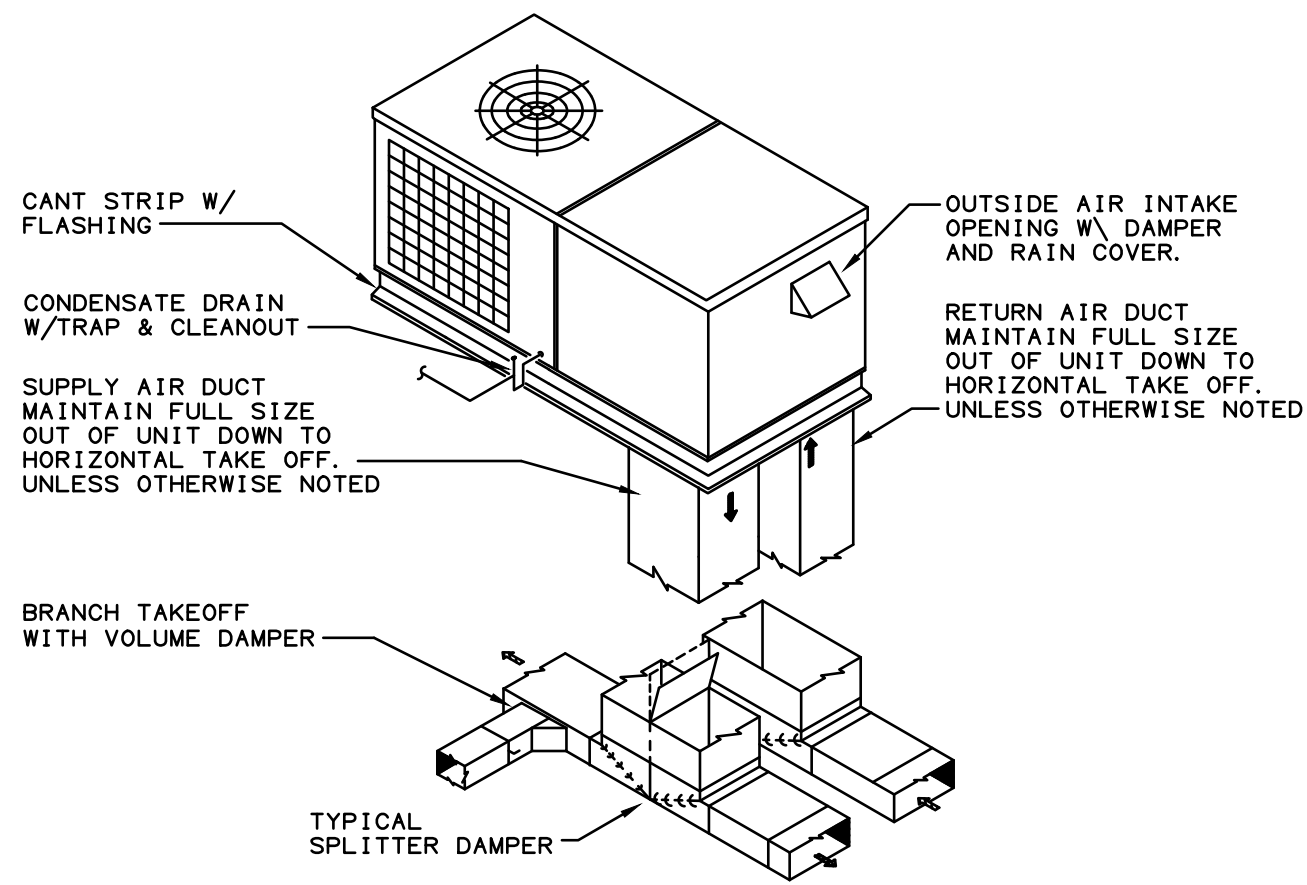
AA26002490

SIGN/SEAL

DATE

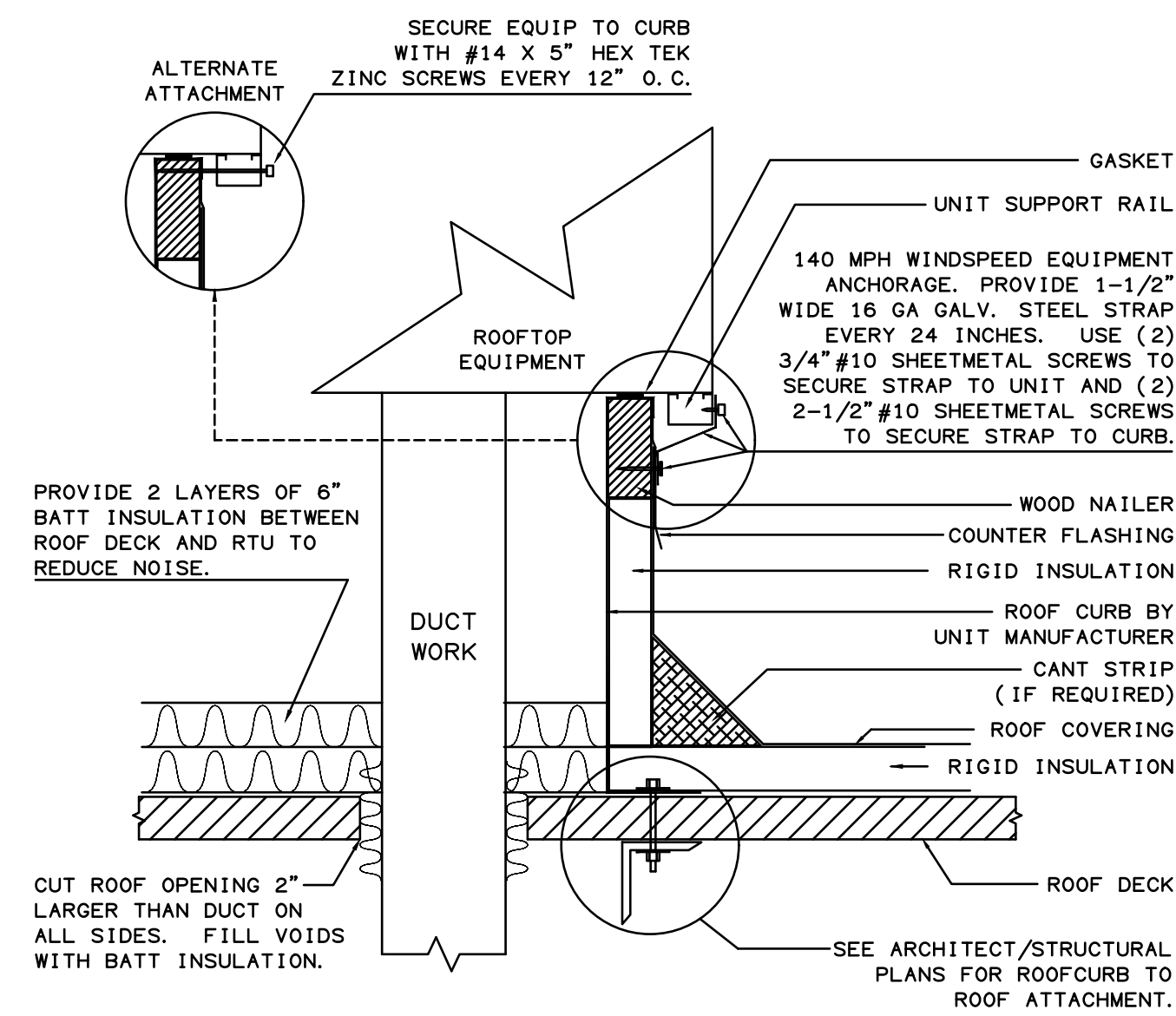
SHEET 7-1 OF

STOFFER & ASSOCIATES, INC.
CONSULTING ENGINEERS CA #26069
10381 Hart Branch Circle Orlando, Florida 32832
Randall D. Stoffer, P.E. PE #37367
Phone (407) 381-4555 Fax (407) 249-1520
ELECTRICAL - HVAC - PLUMBING



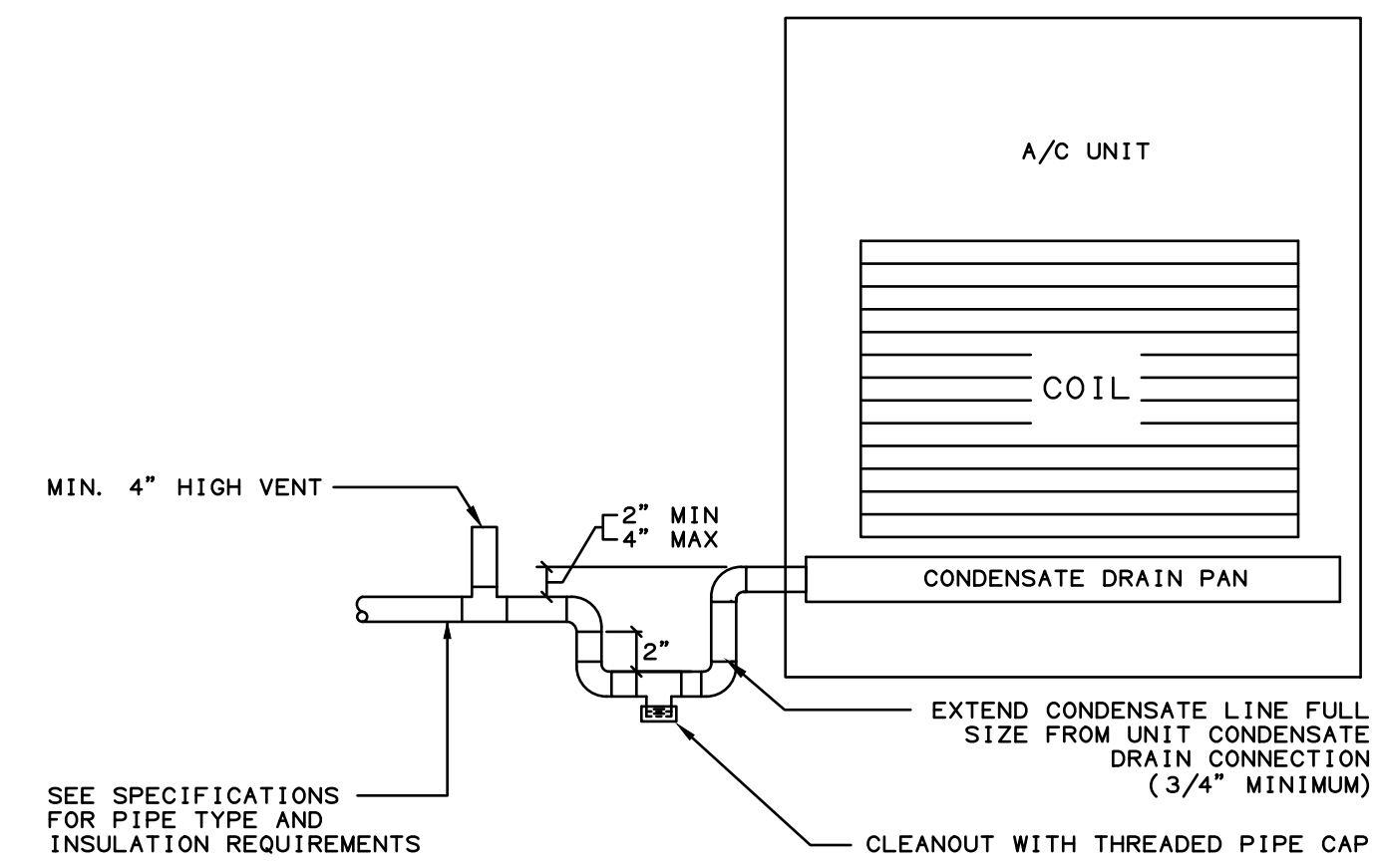
ROOFTOP UNIT DETAIL
N.T.S.

1
M-2



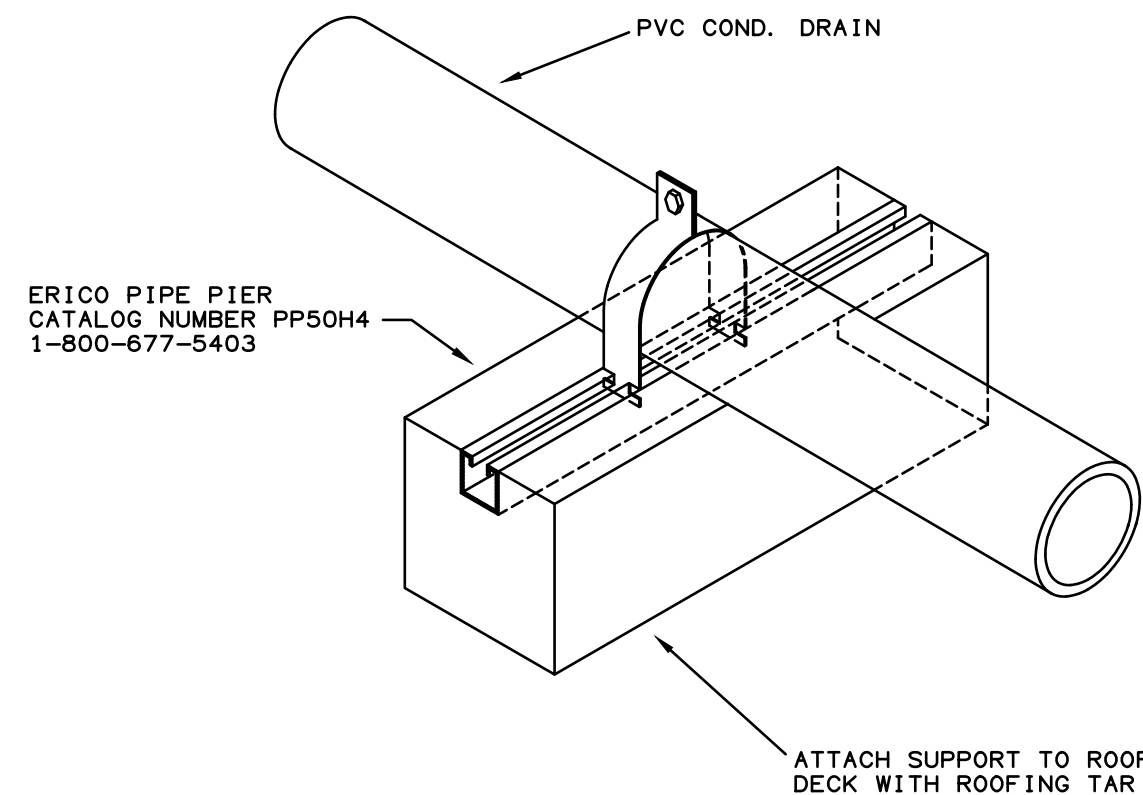
ROOFTOP UNIT CURB DETAIL
N.T.S.

2
M-2



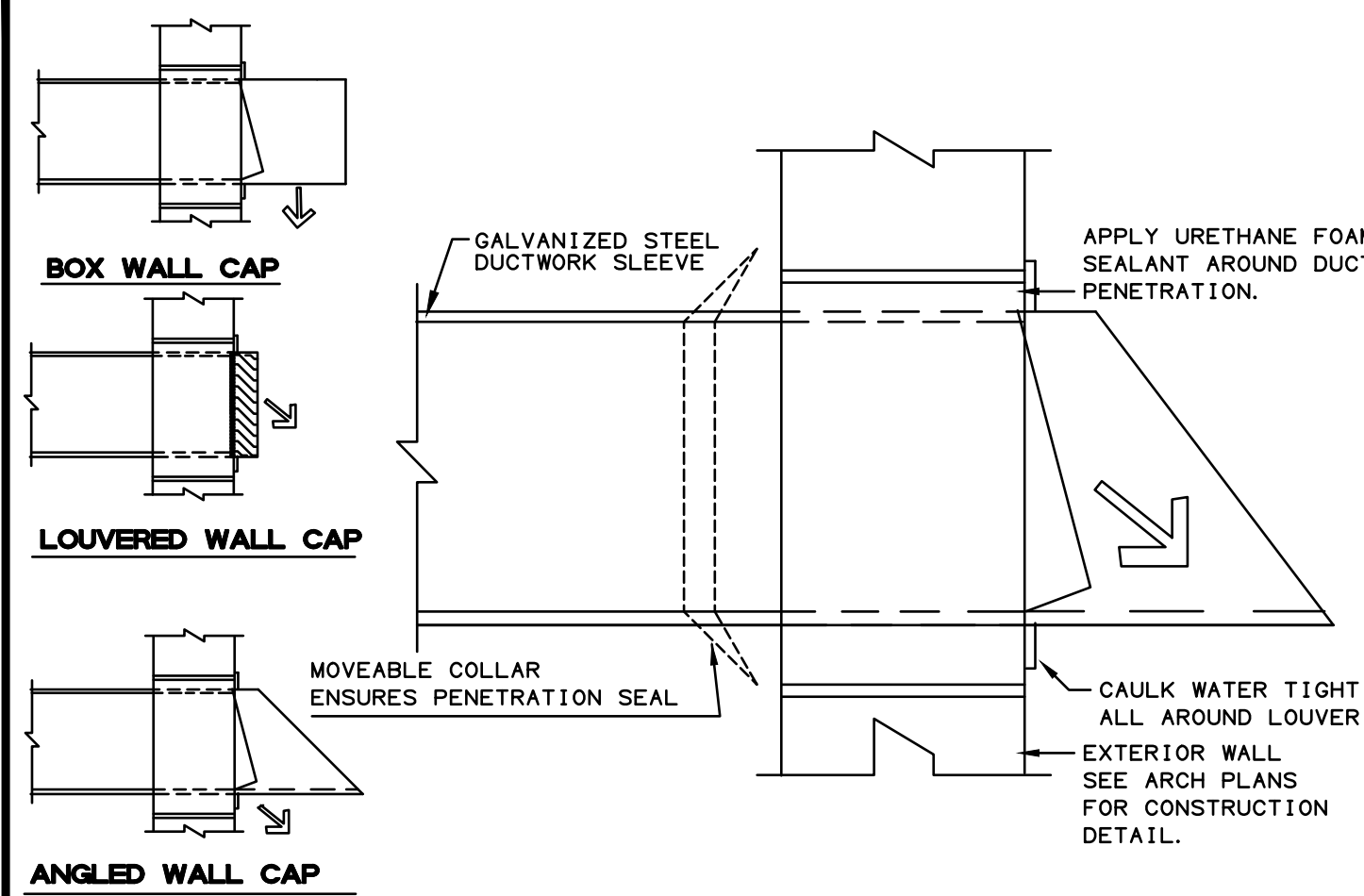
CONDENSATE TRAP DETAIL
N.T.S.

3
M-2



CONDENSATE PIPING ROOF SUPPORT DETAIL
N.T.S.

4
M-2



- NOTES:
1. - PROVIDE BACKDRAFT DAMPER W/ BIRDSCREEN
2. - FLASH & SEAL WALL AND ROOF CAP
3. - PROVIDE INTERNAL ISOLATION AND SOUND INSULATION
4. - SUPPORT FAN FROM STRUCTURE

WALL CAP DETAIL
N.T.S.

5
M-2

MECHANICAL EQUIPMENT NOTES:

- ALL MECHANICAL EQUIPMENT SHALL BE ARI & U.L. LISTED WHERE APPLICABLE AND RATED FOR THE REQUIRED SERVICE, PRESSURES, TEMPERATURES, AND SHALL BE PROVIDED WITH ALL NECESSARY TRANSFORMERS, SEALS, VALVES, CONNECTIONS, ETC. TO FUNCTION PROPERLY.
- MOUNT ALL WALL THERMOSTATS AT 48" AFF DUE TO ADA REQUIREMENTS.
- INSTALL ALL EQUIPMENT TO COMPLY WITH THE MANUFACTURERS SPECIFICATIONS AND CLEARANCE REQUIREMENTS.
- ALL INSULATION WILL HAVE FIRE/SMOKE RATING LESS THAN 25/50.
- PROVIDE A MIN. OF 3' CLEARANCE IN FRONT OF ALL 120-240 VOLT RATED PANELS AND DISCONNECTS. PROVIDE ADEQUATE SIDE CLEARANCE PER NEC.
- PROVIDE IONIZATION TYPE AIR DUCT SMOKE DETECTORS WITH ACCESS DOORS, WHERE INDICATED ON PLANS. ALL SMOKE DETECTORS SHALL BE BY ONE MANUFACTURE, COORDINATE VOLTAGE ETC. WITH ELECTRICAL CONTRACTOR AND FIRE ALARM SYSTEM BEFORE ORDERING. UPON DETECTION, SMOKE DETECTORS SHALL SHUT DOWN ASSOCIATED AIR MOVING EQUIPMENT AND ALL AIR MOVING EQUIPMENT SERVING THAT COMMON PLENUM. CONNECT SMOKE DETECTOR TO BUILDING CENTRAL FIRE ALARM SYSTEM. THE ACTUATION OF A DUT SMOKE DETECTOR SHALL ACTIVATE A VISIBLE AND AUDIBLE SUPERVISORY SIGNAL AT A CONSTANTLY ATTENDED LOCATION. IF THE BUILDING DOES NOT HAVE A CENTRAL FIRE ALARM SYSTEM, PROVIDE REMOTE ANNUNCIATOR/TEST STATION WITH VISIBLE AND AUDIBLE SIGNAL IN AN APPROVED LOCATION. (PER NFPA 90A CH 4-4.4 AND FMC 606.4.1). DUCT SMOKE DETECTOR SHALL BE "SYSTEM SENSOR" - DH400ACDC1 WITH APA451 ANNUNCIATOR OR EQUAL.
- PROVIDE FLEXIBLE DUCT CONNECTORS, RATED AS REQUIRED, TO ALL FANS, A/C UNITS, OR MECHANICAL EQUIPMENT, EXCEPT FANS USED FOR GREASE EXHAUST.
- PROVIDE VIBRATION ISOLATORS ON ALL MECHANICAL EQUIPMENT AS CALLED FOR IN THE SPECIFICATIONS OR DETAILS. IF NOT SPECIFIED, AS RECOMMENDED BY MANUFACTURER FOR QUIET AND VIBRATION FREE OPERATION.
- PROVIDE A MIN. OF 10' CLEARANCE BETWEEN O/A INTAKES AND VTR OR EXHAUST OPENINGS.
- HVAC CONTRACTOR SHALL TEST AND BALANCE ALL MECHANICAL EQUIPMENT, AIR DEVICES, EXTRACTORS, DAMPERS, A/C UNITS, FANS, ETC. TO PROVIDE THE DESIGN QUANTITIES AS SHOWN ON THE PLANS OR SCHEDULES. T&B WORK SHALL INCLUDE ADJUSTING (OR REPLACING) PULLEYS AND DRIVE SETTINGS AS REQUIRED TO PROVIDE AIR FLOWS INDICATED. PROVIDE A WRITTEN T & B REPORT IN ACCORDANCE WITH THE AIR BALANCE COUNCIL STANDARDS.
- RUN CONDENSATE DRAINS TO ROOF DRAIN. GRAVITY CONDENSATE DRAINS SHALL BE A MINIMUM OF 3/4" UP TO 10 TONS, 1" UP TO 25 TONS, 1-1/2" UP TO 100 TONS, AND 2" UP TO 250 TONS. SIZES ARE FOR TOTAL CONNECTED TONNAGE. CONDENSATE DRAINS SHALL BE SCHEDULE 40 PVC.
- MOUNT ALL OUTDOOR EQUIPMENT FOR WIND LOADS AND MOUNTING HEIGHTS AS REQUIRED BY LOCAL CODES. ALL CURBS SHALL EXTEND 12" MIN. ABOVE FINISHED ROOF. PROVIDE EXTENDED HEIGHT CURBS WHERE ROOF INSULATION EXCEEDS 2 INCHES IN THICKNESS.
- PROVIDE STRANDED COPPER CONTROL WIRING.
- ALL PIPING AND DUCTWORK SHALL BE SLEEVED THRU WALLS, BEAMS, SLABS, ETC. AS REQUIRED AND COORDINATED WITH THE STRUCTURAL ENGINEER. PROVIDE NECESSARY TRANSITIONS AS REQUIRED FOR DUCTWORK INSTALLATION.
- BALANCE OUTSIDE AIR DAMPER TO PROVIDE FRESH AIR AS INDICATED IN VENTILATION SCHEDULE.
- NEW ROOFTOP UNITS ARE TO HAVE GUARDS ON COND COILS.

COORDINATION NOTES:

- A/C CONTRACTOR SHALL BE RESPONSIBLE TO COORDINATE HIS WORK FOR SIZE, LOCATION, CLEARANCE, ACCESS AND ELECTRICAL CHARACTERISTICS WITH ALL OTHER TRADES AND TO PROVIDE SHOP DRAWINGS TO THE ENGINEER FOR REVIEW BEFORE INSTALLATION OF DUCTWORK OR EQUIPMENT. SHOP DRAWING WILL INCLUDE BEAM OR STRUCTURE ELEVATION & REQUIRED EQUIPMENT ACCESS AREAS.
- WALL, ROOF, AND CEILING OPENINGS INDICATED ON CONTRACTOR DRAWINGS ARE NOMINAL DIMENSIONS ONLY AND ALL DUCT, PIPE OR EQUIPMENT PENETRATIONS SHALL BE SLEEVED AND FIRE RATED AS REQUIRED, ADJUST OPENINGS
- COORDINATE LOCATION OF CEILING DIFFUSERS, GRILLES AND REGISTERS IN THE FIELD WITH LIGHTS, SPRINKLERS AND ARCHITECTURAL ELEMENTS.
- COORDINATE LOCATION OF A/C UNITS, THERMOSTATS, FANS AND DUCTWORK WITH BUILDING STRUCTURE AND OTHER TRADES SO THAT NO INTERFERENCES OCCUR.
- IN GENERAL, DUCT OFFSETS HAVE NOT BEEN SHOWN. A/C CONTRACTOR TO COORDINATE THESE AS REQUIRED.
- MECHANICAL PLANS IN GENERAL, ARE DIAGRAMMATIC IN NATURE, AND ARE TO BE READ IN CONJUNCTION WITH ARCH. PLUMBING, ELECTRICAL AND STRUCTURAL PLANS. DUCT AND PIPING OFFSETS, BENDS AND TRANSITIONS WILL BE REQUIRED TO PROVIDE AND INSTALL A COMPLETE FUNCTIONAL SYSTEM AND SHALL BE PROVIDED BY THE CONTRACTOR AT NO ADDITIONAL COST TO THE OWNER.
- THE CONTRACTOR SHALL VERIFY EXISTING CONDITIONS PRIOR TO BIDDING, ORDERING, FABRICATION OR INSTALLATION OF MATERIALS OR EQUIPMENT. ADVISE ENGINEER OF ANY DISCREPANCIES.

GENERAL NOTES:

- THE CONTRACTOR SHALL PROVIDE ALL LABOR, MATERIALS, EQUIPMENT, ACCESS PANELS, CONTROL SYSTEMS, DEVICES, PERMITS AND SERVICES NECESSARY FOR FURNISHING AND INSTALLING OF A COMPLETE SERVICEABLE MECHANICAL SYSTEM.
- ALL MECHANICAL SYSTEMS ARE TO BE INSTALLED IN ACCORDANCE WITH ALL APPLICABLE SECTIONS OF THE NFPA STANDARDS, ANSI STANDARDS, THE LOCAL BUILDING CODE, PLANS AND SPECIFICATIONS.
- ALL MATERIALS SHALL BE NEW (UNLESS OTHERWISE INDICATED) AND ANY DAMAGED EQUIPMENT SHALL BE REPLACED.
- CONTRACTOR WILL WARRANTY ALL MECHANICAL SYSTEMS, EQUIPMENT, PARTS AND LABOR, INSTALLED UNDER HIS CONTRACT, FOR A PERIOD OF ONE (1) YEAR AFTER C.O.
- PROVIDE SUBMITTALS IN PDF FORMAT FOR REVIEW BY ARCH/ENGR PRIOR TO PURCHASING ANY EQUIPMENT OR MATERIALS. SUBMITTALS SHALL INCLUDE ALL ITEMS AND MATERIALS SUPPLIED BY CONTRACTOR. SUBMITTALS SHALL HAVE A SUMMARY SHEET SHOWING ALL SCHEDULED INFORMATION. ANY EQUIPMENT OR MATERIALS INSTALLED WITHOUT REVIEWED SUBMITTALS SHALL BE REMOVED AND REINSTALL AT ARCH/ENGR DISCRETION WITH NO ADDITIONAL COMPENSATION TO CONTRACTOR. CONTRACTOR SHALL COORDINATE ALL ASPECTS OF HIS EQUIPMENT WITH ALL OTHER TRADES.
- PROVIDE 2 SETS (PLUS PDF COPY) OF MAINTENANCE AND OPERATION MANUALS ON ALL MECHANICAL EQUIPMENT OR SYSTEMS.
- ALL CUTTING, PATCHING, STRUCTURAL STEEL, WEATHER PROOFING, PAINTING, AND WALL OPENINGS SHALL BE BY THE GENERAL CONTRACTOR.
- ALL LOUVERS, GRILLES, PIPING, ETC. SHALL BE PAINTED TO MATCH SURROUNDING COLOR AND TEXTURES AS REQUIRED BY ARCHITECT. VERIFY COLOR AND TEXTURE WITH ARCHITECT.
- ALL OPENINGS IN BUILDING STRUCTURE, FOR DUCTWORK, PIPING, ETC. TO BE 1/2" LARGER (ON ALL SIDES) THEN THE OUTSIDE DIMENSIONS. FILL VOIDS WITH FIRE RETARDANT SILICONE (I.E. 3MT FIRE BARRIER SILICONE CARTRIDGE 2000+.).
- THE HVAC LOAD CALCULATIONS ARE BASED ON THE FOLLOWING PARAMETERS:
a) BUILDING TYPE: RETAIL
b) ROOF: METAL BAR JOIST WITH R=19 ROOF INSULATION.
c) WALLS: CBU WITH R=4.2 MINIMUM INSULATION
d) RETURN AIR PLENUM: NO
e) GLASS: DOUBLE PANE W/SHGC=0.30

DUCTWORK & ACCESSORIES NOTES :

- ALL DUCTWORK SHALL BE AS FOLLOWS OR APPROVED EQUAL:
a) SUPPLY - CERTAINTED ULTRA DUCT GOLD 1-1/2" 3/4 LB FIBERGLASS DUCTBOARD R=6.0.
b) RETURN - CERTAINTED ULTRA DUCT GOLD 1-1/2" 3/4 LB FIBERGLASS DUCTBOARD R=6.0.
c) EXHAUST - GALV. SHEETMETAL 28 GA MINIMUM.
- ASSEMBLE, INSTALL, AND SEAL DUCTWORK IN ACCORDANCE WITH SMACNA "HVAC DUCT CONSTRUCTION STANDARD", UNLESS OTHERWISE NOTED ON PLANS CONSTRUCT DUCTWORK TO 2" DUCT CLASS, SEAL TO 100% CLOSURE.
- SEAL ALL SHEETMETAL DUCTS JOINTS WITH RCD #8 MASTIC.
- MAKE JOINTS FOR DUCT WRAP AND DUCTBOARD WITH GLASS FABRIC AND VAPOR BARRIER COATING TO 30 MILL DRY FILM THICKNESS, RCD #9.
- CONTRACTOR SHALL PROTECT ALL FIBERGLASS INSULATION PRODUCTS FROM DAMAGE. INSULATION PRODUCTS SHALL NOT BE ALLOWED TO GET WET. INSULATION DAMAGED AS A RESULT OF MOISTURE, VANDALISM, OR CONSTRUCTION TRAFFIC SHALL BE REPLACED.
- USE RADIUS RECTANGULAR FITTINGS OR TURNING VANES IN ALL SUPPLY DUCT ELBOWS, CONICAL BRANCH TAKE-OFFS, SPLITTER DAMPERS WHERE INDICATED ON DRAWINGS AND VOLUME CONTROL EXTRACTORS IN ALL BRANCH DUCTS OR DIFFUSER CONNECTIONS.
- ALL DUCT SIZES ARE CLEAR INSIDE DIMENSIONS.
- PLANS ARE DIAGRAMMATIC. IN GENERAL DUCT OFFSETS HAVE NOT BEEN SHOWN. A/C CONTRACTOR SHALL COORDINATE THESE AS REQUIRED WITH BUILDING STRUCTURE AND OTHER TRADES.

REVISIONS	NO.	DATE
	1	
	2	
	3	
	4	
	5	
	6	
	7	
	8	

PROJECT NO: 173CB903-01
DATE: 06/07/09

HVAC NOTES AND DETAILS

NEW RETAIL CENTER FOR:
KADMAR PLAZA
ORLANDO, FLORIDA

AA26002490
RABITS & ROMANO ARCHITECTURE
PLANNING AND DESIGN
info@rabits-architect.com
www.rabits-architect.com
TEL - 407-490-0350
FAX - 407-232-6000
5127 SOUTH ORANGE AVE.
SUITE 110 ORLANDO, FL 32809

SIGN/SEAL

DATE

SHEET
M-2

OF

STOFFER & ASSOCIATES, INC.
CONSULTING ENGINEERS CA #26069
10381 Hart Branch Circle Orlando, Florida 32832
Randall D. Stoffer, P.E. PE #37367
Phone (407) 381-4555 Fax (407) 249-1520
ELECTRICAL - HVAC - PLUMBING